



तपसा प्राप्यते यशः  
Khedut Shikshahan Mandal's

Phone No-(02320)224661

# R. B. Madkholkar Mahavidyalaya, Chandgad

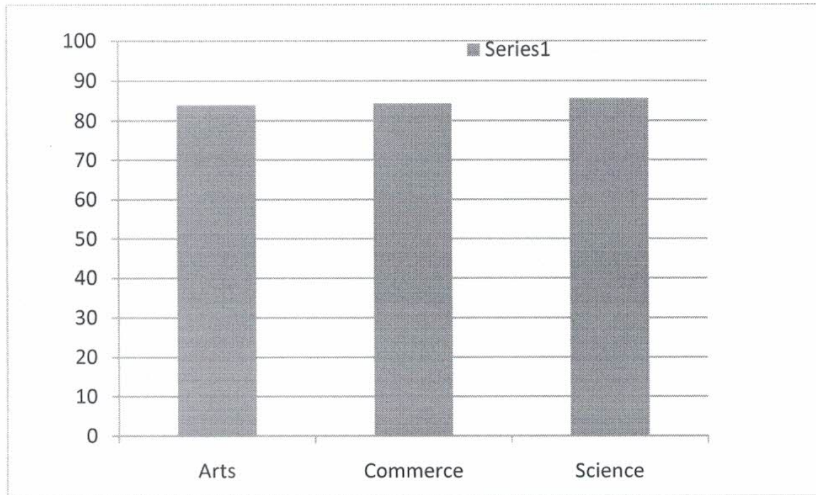
Tal- Chandgad, Dist-Kolhapur (M.S.) 416509  
(Affiliated to Shivaji University, Kolhapur)  
Accredited By NAAC "B"

## Feedback Analysis

### Student feedback on (course)curriculum(2022-23)

sample size: 20%


Name of faculty	Name of the Department	Student Weightages of course in %	Average Student Weightages of course in %	Grade point
Arts	Marathi	91.93	83.91	8.39
	Hindi	77.00		
	English	85.00		
	History	94.10		
	Economics	71.50		
Commerce	Commerce & Management	83.70	84.35	8.44
	Accountancy	85.00		
Science	Physics	---	85.70	8.57
	Chemistry	82.80		
	Zoology	91.30		
	Botany	83.90		
	Comp. Science	85.80		
	Statistics	84.70		



Conclusion :

From above graph it is clear that more than 84.65% third year students rated curriculum as " Excellent " .

  
Chairman  
Feedback Committee

  
Principal  
**PRINCIPAL**  
R. B. Madkholkar Mahavidyalaya  
Chandgad, Tal. Chandgad, Dist. Kolhapur.



तपसा प्राप्यते यशः  
Khedut Shikshahan Mandal

Phone No-(02320)22466

# R. B. Madkholkar Mahavidyalaya, Chandgad

Tal- Chandgad, Dist-Kolhapur (M.S.) 416509  
(Affiliated to Shivaji University, Kolhapur)  
Accredited By NAAC "B"

## Teachers feedback analysis on curriculum

YEAR - 2022-23

Sample Size= 25

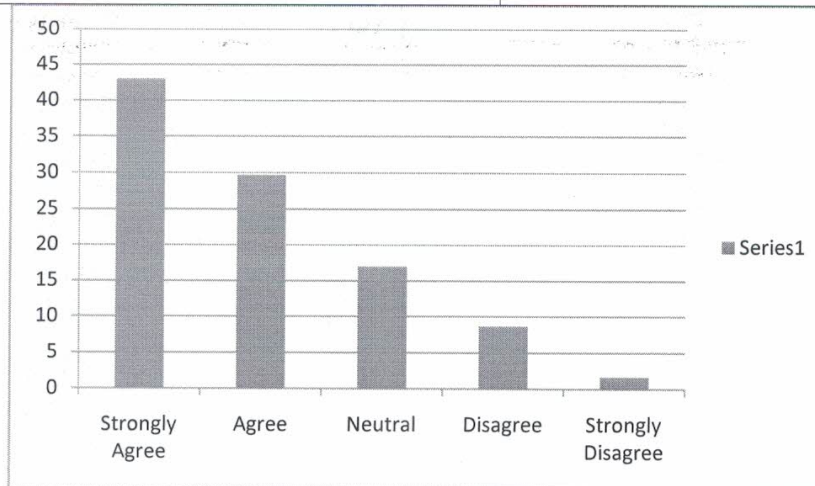
	Particulars	Feedback	Number of Support Staff	Percentage (%)
1	The allocation of the credits to the course is appropriate	Strongly Agree	18	72.00
		Agree	6	24.00
		Neutral	1	04.00
		Disagree	0	0
		Strongly Disagree	0	0
2	The depth of the course content is adequate to have significant learning outcomes	Strongly Agree	19	76.00
		Agree	3	12.00
		Neutral	2	8.00
		Disagree	1	4.00
		Strongly Disagree	0	0
3	The syllabus is sufficient to bridge the gap between the industry standards/current global scenarios and academics.	Strongly Agree	14	56.00
		Agree	5	20.00
		Neutral	6	24.00
		Disagree	0	0
		Strongly Disagree	0	0
4	The timely coverage of syllabus is possible in the mentioned no. of hours.	Strongly Agree	4	16.00
		Agree	8	32.00
		Neutral	0	0
		Disagree	8	32.00
		Strongly Disagree	5	20.00
5	The unit/ sections in the syllabus	Strongly Agree	8	32.00

	are properly sequenced.	Agree	9	36.00
		Neutral	5	20.00
		Disagree	3	12.00
		Strongly Disagree	0	0
6	The recommended textbooks are adequate and map onto the syllabus	Strongly Agree	8	32.00
		Agree	7	28.00
		Neutral	6	24.00
		Disagree	4	16.00
		Strongly Disagree	0	00.00
7	Sufficient reference materials and books are available for the topics mentioned in the syllabus.	Strongly Agree	11	44.00
		Agree	7	28.00
		Neutral	5	20.00
		Disagree	2	08.00
		Strongly Disagree	0	0
8	The pre-requisite are appropriate for this course.	Strongly Agree	5	20.00
		Agree	11	44.00
		Neutral	5	20.00
		Disagree	4	16.00
		Strongly Disagree	0	0
9	The course content satisfy the needs of follow-on courses.	Strongly Agree	15	60.00
		Agree	6	24.00
		Neutral	0	0
		Disagree	4	16.00
		Strongly Disagree	0	0
10	The programme and curriculum is enriched as compared to similar programme offered by other universities.	Strongly Agree	11	44.00
		Agree	9	36.00
		Neutral	5	20.00
		Disagree	0	00
		Strongly Disagree	0	00
11	The designed experiments stimulate the interest of students	Strongly Agree	7	28.00
		Agree	10	40.00

	in the subject and deepen their understanding through relating theory to practice (Experimental learning).	Neutral	8	32.00
		Disagree	0	00
		Strongly Disagree	0	00
12	The practical enable to develop experimental, design, problem solving and analysis skills of the students	Strongly Agree	9	36.00
		Agree	8	32.00
		Neutral	8	32.00
		Disagree	0	00
		Strongly Disagree	0	00

Average:

Strongly Agree	43.00
Agree	29.67
Neutral	17.00
Disagree	08.67
Strongly Disagree	01.66



### Conclusion :-

Teacher gave their feedback and we analyzed it and found that about 72.67 % teacher gave their opinion as strongly agree and agree and 17% of them are neutral and 10.33 disagree .

*Ripatu*  
Chairman  
Feedback Committee

*R. B. Madkholkar*  
Principal  
**PRINCIPAL**  
R. B. Madkholkar Mahavidyalaya  
Chandgad, Tal. Chandgad, Dist. Kolhapur



तपसा प्राप्यते यशः  
Khedut Shikshahan Mandal's

Phone No-(02320)224

# R. B. Madkholkar Mahavidyalaya, Chandgad

Tal- Chandgad, Dist-Kolhapur (M.S.) 416509  
(Affiliated to Shivaji University, Kolhapur)  
Accredited By NAAC "B"

## *Employer feedback analysis on curriculum*

YEAR - 2022-23

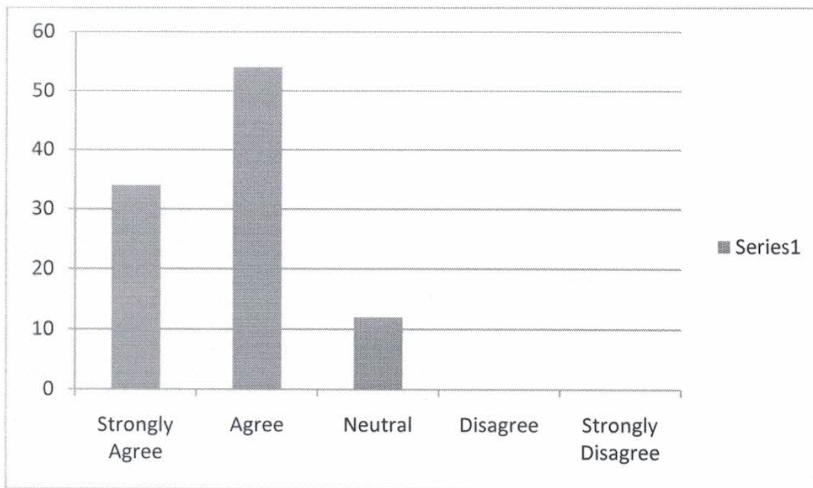
Sample size=10

	Particulars	Feedback	Number of employer	Percentage (%)
1	Curriculum relevant for employability :	Strongly Agree	2	20
		Agree	7	70
		Neutral	1	10
		Disagree	0	0
		Strongly Disagree	0	0
2	Curriculum effective in developing innovative thinking :	Strongly Agree	5	50
		Agree	5	50
		Neutral	0	0
		Disagree	0	0
		Strongly Disagree	0	0
3	Syllabus effective in developing skill oriented human resources.	Strongly Agree	4	40
		Agree	4	40
		Neutral	2	20
		Disagree	0	0
		Strongly Disagree	0	0
4	Current syllabus is need based :	Strongly Agree	5	50
		Agree	3	30
		Neutral	2	20
		Disagree	0	0
		Strongly Disagree	0	0
		Strongly Agree	1	10

5	Effectiveness for curriculum for development of entrepreneurship	Agree	8	80
		Neutral	1	10
		Disagree	0	0
		Strongly Disagree	0	0

Average:

Strongly Agree	34.00
Agree	54.00
Neutral	12.00
Disagree	00.00
Strongly Disagree	00.00



**Conclusion:**

We have collected feedback from the employers where we ask our employer to comment on the curriculum .We have received feedback from 10 employers but no special comment was given on curriculum .However , we did following analysis from received feedback forms. Nearly 88 % employer strongly agree and agree and 12 % neutral.

*[Signature]*  
 Chairman  
 Feedback Committee

*[Signature]*  
 Principal  
**PRINCIPAL**  
 R. B. Madkholkar Mahavidyalaya  
 Chandgad, Tal. Chandgad, Dist. Kolhapur.



तपसा प्राप्यते यशः  
Khedut Shikshahan Mandal's

Phone No-(02320)224661

# R. B. Madkholkar Mahavidyalaya, Chandgad

Tal- Chandgad, Dist-Kolhapur (M.S.) 416509  
(Affiliated to Shivaji University, Kolhapur)  
Accredited By NAAC "B"

## *Alumni feedback analysis on curriculum*

YEAR - 2022-23

Sample size=25

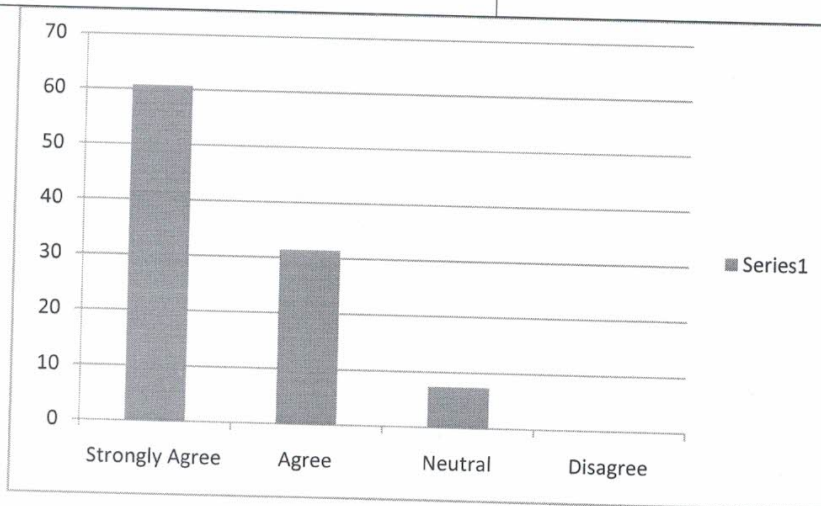
	Particulars	Feedback	Number of Alumni	Percentage (%)
1	The curriculum had been updated from time to time.	Strongly Agree	13	52.00
		Agree	10	40.00
		Neutral	02	08
		Disagree	0	0
		Strongly Disagree	0	0
2	Curriculum was relevant for employability :	Strongly Agree	18	72.00
		Agree	06	24.00
		Neutral	01	04
		Disagree	0	0
		Strongly Disagree	0	0
3	Curriculum was effective in developing innovative thinking :	Strongly Agree	16	64.00
		Agree	06	24.00
		Neutral	03	12
		Disagree	0	0
		Strongly Disagree	0	0
4	Syllabus was effective in developing skill oriented human resources.	Strongly Agree	17	68.00
		Agree	06	24.00
		Neutral	02	08.00
		Disagree	0	0
		Strongly Disagree	0	0



5	Syllabus was need based :	Strongly Agree	13	52
		Agree	10	40.00
		Neutral	2	08.00
		Disagree	0	08.00
		Strongly Disagree	0	0
6	Curriculum was effective for development of entrepreneurship	Strongly Agree	14	56.00
		Agree	09	36.00
		Neutral	01	04.00
		Disagree	0	0
		Strongly Disagree	01	04.00

Average:

Strongly Agree	60.67
Agree	31.33
Neutral	07.34
Disagree	0
Strongly Disagree	0.67



**Conclusion:**

We have collected feedback from the alumni where we ask our alumni to comment on the curriculum .We have received feedback from 25 alumni but no special comment was given on curriculum .However , we did following analysis from received feedback forms. Nearly 92 % alumni are strongly agree and agree and 7.34 % are neutral.

Chairman

Feedback Committee

PRINCIPAL

R. B. Madkholkar Mahavidyalaya  
Chandgad, Tal. Chandgad, Dist. Kolhapur.